



静岡で職人  
会える見られる  
技

English

Come meet our  
master craftsmen  
and explore  
artisanal techniques

Shizuoka's  
MONOZUKURI  
Map

静岡  
ものづくり  
マップ

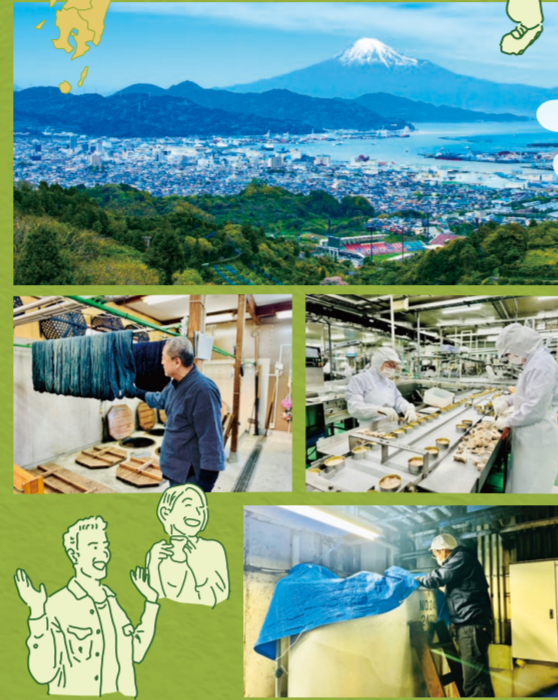
Shizuoka's  
Monozukuri  
Map



Regional Industry Division, Commerce and Industry Bureau,  
Ministry of Economy, Trade and Industry, Shizuoka Prefectural Government  
9-6 Otemachi, Aoi-ku, Shizuoka City, Shizuoka 420-8601

A legacy of craftsmanship  
From generation to generation.  
The love and labor that goes into each piece  
Gives it a timeless charm.  
Come witness, feel, and experience  
The enamoring tangible allure of Shizuoka's crafts  
In this majestic land of Mount Fuji.

Nestled near the heart of Japan, Shizuoka Prefecture faces the vast expanse of the Pacific Ocean and offers stunning views of Mount Fuji. The prefecture is blessed with hot-spring baths or onsens, nurturing nature, as well as convenient transportation options. Shizuoka Prefecture, stretching extensively from east to west, has seen the development of a unique culture of monozukuri, or craftsmanship, in each region that has been built over many years. The origins of traditional crafts in the central region can be traced back to the early Edo period, 400 years ago. During this time, highly skilled craftsmen from various parts of the country came together to construct the Kunozaen Toshogu and Shizuoka Sengen shrines. In the western region, the flourishing cotton weaving industry led to the growth of the automotive industry by adapting the power mechanism of the automatic loom to an automobile engine. There are many more little-known stories of the origins of Shizuoka's monozukuri. Some are still cherished as traditions, while others have evolved into modern industries. These are the intangible skills that transcend mere touch or sight. Come immerse yourself in the narrative of Shizuoka's craftsmanship, creating memories of your trip that - like the crafts - will stand the test of time.



D...Discover B...Buy  
E...Experience L...Learn

も

もっと好きになる  
伝統工芸

Deepen your love and appreciation  
for traditional crafts

33 Gotemba City D E B

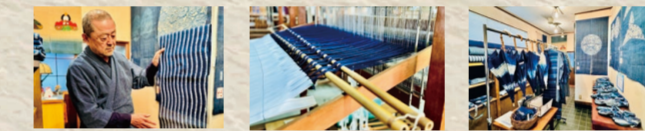


Koharaya Indigo Dyeing Folkcraft

Koharaya stands as the sole producer of the Mikurya indigo-dyeing and weaving, a cherished traditional craft of Shizuoka. This studio has been in operation since the Edo period, and the fourth generation is currently carrying on the tradition. Koharaya uses a technique called *shouzaizome*, which does not use chemicals. Threads are dyed after multiple indigo-dye soaks, which are then carefully woven on a loom. The *noren* (traditional Japanese curtains) and *yukata* (summer kimonos) made from these indigo-dyed fabrics are all so beautiful with great depths of the indigo color, giving them a distinctly Japanese feel.

Shizuoka's Traditional Crafts

During the Edo period (1603-1868), Shizuoka Prefecture prospered as an important location on the historic Tokaido route and enjoyed close ties to Kyoto and Edo (present-day Tokyo), which were influential centers in Japanese history. For this, diverse and high-quality traditional crafts are found here, including textiles, dyed goods, ceramics, lacquerware, woodwork, bamboo crafts, and hina dolls.



Visitors can tour the studio and try their hand at indigo-dyeing *tenugui* (traditional Japanese hand towels) and T-shirts. (Reservations required at least 7 to 10 days in advance. Consult the Gotemba City Tourism Association to arrange interpreters.)

Koharaya Indigo Dyeing Folkcraft

676 Hagiwara, Gotemba City, Shizuoka  
Tel: 0550-82-0511



Keeping handmade flavors  
long-lasting

20 Shizuoka City B



YUI CANNING CO., LTD

Yui Canning is a small canning factory founded in 1933. The company pride is the White Ship canned tuna made out of high-quality albacore tuna caught in the summer when the fat content is at its peak paired with quality cottonseed oil. Dark-colored meat and the bones of tunas are meticulously removed by hand, ensuring each piece is expertly prepared. Once packed, the can is thoroughly aged for over six months, allowing the tuna and oil to blend together, making it more delicious.

Shizuoka's Canning Industry

The canning industry of Shimizu City (now Shimizu-ku, Shizuoka City) began during the early Showa period (1926-1945) using tuna landed at Shimizu Port and locally grown mandarin oranges. Today, Shizuoka Prefecture commands more than 90% of the domestic market for canned tuna.



YUI CANNING CO., LTD

429-1 Yui, Shimizu-ku, Shizuoka City, Shizuoka  
Tel: 0120-272-548



の

残していこう  
手作りの味



Uncompromising sake craftsmanship  
producing only the finest

05 Hamamatsu City D E B



HANANOMAI BREWING

Hananomai Brewing is dedicated to crafting exceptional sake, employing the finest sake rice from Shizuoka, handmade koji (malted rice), and self-sourced groundwater. The first big job of the new year is the making of daiginjo sake, which is carried out entirely by hand without relying on machines to pass on the brewer's traditional skills and techniques. Hananomai's daiginjo, perhaps the pinnacle of the brewer's sake, is made with great love and care, for the soaking time of the rice in water is monitored right down to the second and the koji is attentively looked after regardless of the time of day.

Shizuoka's Sake Industry

Shizuoka Prefecture's locally brewed sake is crafted using carefully selected high-quality sake rice, pristine groundwater sourced from Mount Fuji and the Japanese Southern Alps, and techniques grounded in tradition. Shizuoka came to be known as the "Ginjo Sake Kingdom" for winning many awards at competitions across the country.



Visitors can tour the brewery, enjoy sake tasting, and even try pressing sake - the finishing touch of the brewing process. (Reservations required for sake pressing and tasting experiences. Reservations required for brewery tours for 10 or more people.)

HANANOMAI BREWING

632 Miyaguchi, Hamana-ku, Hamamatsu City, Shizuoka  
Tel: 053-582-2121



く

暮らしのそばに  
江戸時代からの技

Artisanal techniques from the Edo  
period in our midst every day

02 Hamamatsu City D E B



Nukumori Koubou

Nukumori Koubou sells kimono textiles and various goods made from Enshu men tsumugi cotton cloth (cotton pongees), one of the many types of textiles produced in Enshu. There is a valuable automatic loom from circa 1915 on display in the store. The Enshu men tsumugi cotton cloth, known for their gentle colors and stripes, are handwoven and involve the intricate care of multiple craftsmen carrying out various processes from dyeing and coating the threads to warping. Because they are woven on the old-style shuttle looms, the more you use the cloth, the softer the texture will become.

Shizuoka's Textile Industry

Cotton cultivation in the Enshu region in western Shizuoka Prefecture has flourished since the Edo period, and it is today one of Japan's three major cotton textile producing regions. Enshu textiles, crafted by skilled artisans who have inherited ancient techniques, are highly acclaimed both domestically and internationally.



Visitors can observe the weaving process and make their own mini Azuma bag using an Enshu cotton cloth of their choice. (Reservations required)

NUKUMORI KOUBOU

3-12-25 Somechidai, Hamana-ku, Hamamatsu City, Shizuoka  
Tel: 053-545-6391



つ

作り手が守る  
日本の美

Skilled hands preserving  
the beauty of Japan

21 Shizuoka City D B



KAMIYA FURNITURE

Founded in 1972, Kamiya Furniture specializes in producing Japanese-style furniture using lacquer painting techniques. After the Great East Japan Earthquake in 2011, Kamiya Furniture began offering furniture repairing services. Highly-skilled craftsmen respectfully restore cherished pieces, transforming them into a state of beauty that is unrecognizable while preserving the memories they hold. The showroom, where craftsmanship shines throughout, is adorned with furniture that captures the unique beauty of Japan.

Shizuoka's Furniture Industry

The roots of Shizuoka's furniture production can be traced back to the Edo period when skilled craftsmen across Japan were gathered to construct the Shizuoka Sengen Shrine. They stayed on to make lacquered furniture, and their techniques have evolved over time, allowing us to produce a diverse range of furniture today.



The showroom is located on the second floor of the store. Visitors may observe the finishing process of the furniture making, including repair work, on the first floor studio.

KAMIYA FURNITURE

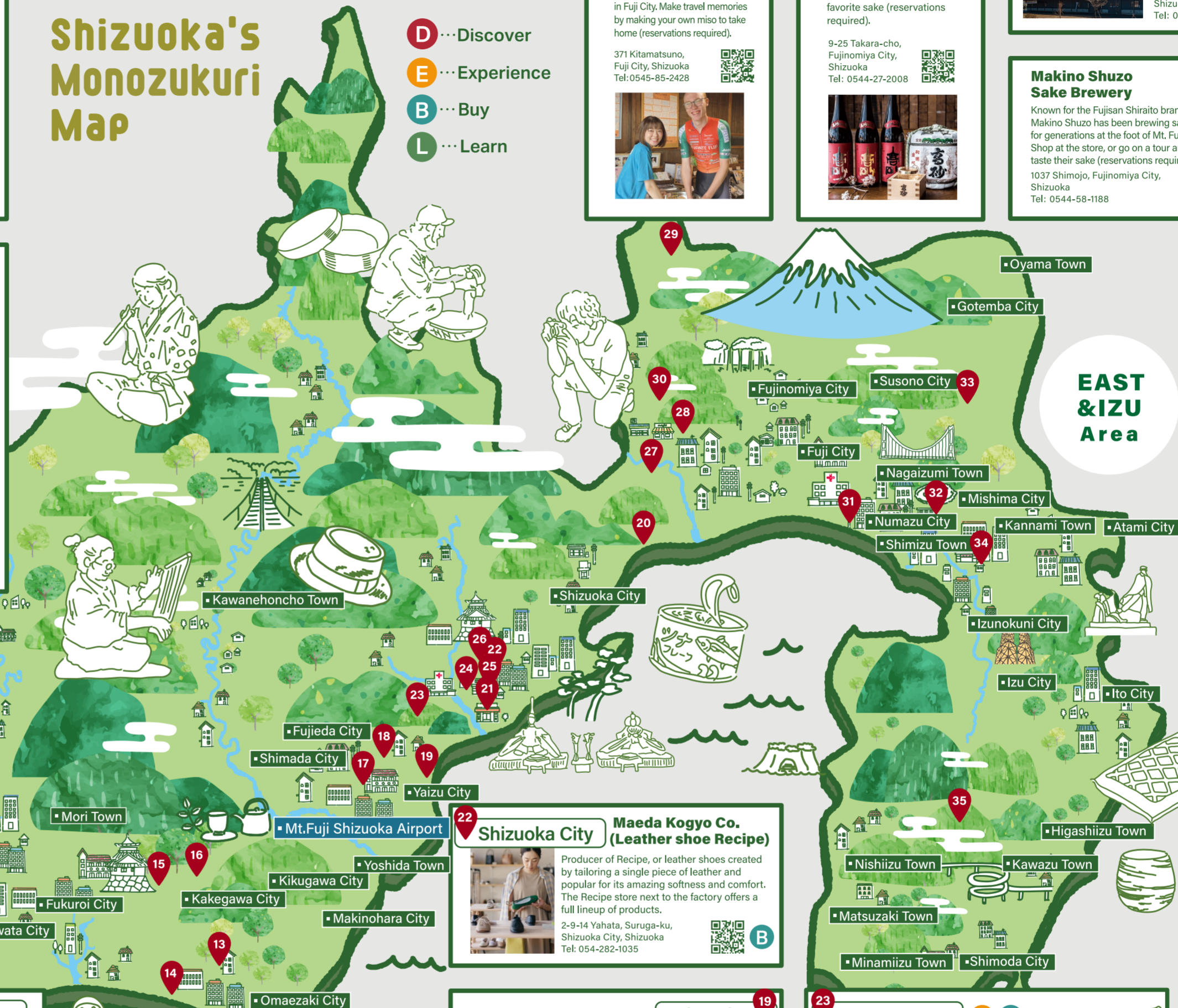
1050-1 Nishiwaki, Suruga-ku, Shizuoka City, Shizuoka  
Tel: 054-281-5161



# 静岡 ものづくり マップ

## Shizuoka's Monozukuri Map

D...Discover  
E...Experience  
B...Buy  
L...Learn



**06 Hamamatsu City**

**SUZUKI ORISHO Co.,LTD. (Orisho Jr)**

A fabric distributor that also works with overseas brands. Enshu textiles (woven fabric) are also available here.

125-1 Kodachi-cho, Chuo-ku, Hamamatsu City, Shizuoka  
Tel: 053-463-5591

**B**

**04 Hamamatsu City**

**Showa Musical Instruments Manufacturing Co.,**

Observe the harmonica manufacturing process; visitors can also experience assembling their own (reservations required).

1-8-55 Kamijima, Chuo-ku, Hamamatsu City, Shizuoka  
Tel: 053-471-4341

**D E B**

**01 Kosai City**

**Sakichi Toyoda Memorial House**

The birthplace of Sakichi Toyoda, the Toyota Group founder, has been preserved as a memorial museum, and the looms he invented are on display.

113-2 Yamaguchi, Kosai City, Shizuoka  
Tel: 053-576-0064

**L**

**27 Fuji City**

**Kanbe Shoyuten (Soy Sauce Shop)**

A miso and koji (malted rice) store that has continued for generations in Fuji City. Make travel memories by making your own miso to take home (reservations required).

371 Kitamatsumo, Fuji City, Shizuoka  
Tel: 0545-85-2428

**E B**

**28 Fujinomiya City**

**Fuji Takasago Sake Brewery**

Tour the brewery and enjoy sake tasting to find your favorite sake (reservations required).

9-25 Takara-cho, Fujinomiya City, Shizuoka  
Tel: 0544-27-2008

**D B**

**29 Fujinomiya City**

**Fujimasa Brewery**

Tour the closest sake brewery to Mt. Fuji (reservations required) and purchase souvenirs here.

450-1 Nebara, Fujinomiya City, Shizuoka  
Tel: 0544-52-0313

**D B**

**31 Numazu City**

**Takashima Brewing Incorporated Company**

Producer of Hakuin Masamune. The standard lineup is available here; come purchase a bottle as a souvenir.

354-1 Hara, Numazu City, Shizuoka  
Tel: 055-966-0018

**B**

**07 Hamamatsu City**

**Meijiya Shoyu (Soy Sauce) Co.,**

Experience making soy sauce and miso, Japan's staple condiments (reservations required).

2276 Komatsu, Hamana-ku, Hamamatsu City, Shizuoka  
Tel: 053-586-2053

**D E B**

**08 Hamamatsu City**

**SUZUKI PLAZA**

Visit this interactive museum to enjoy learning about Suzuki, from its roots to the present day.

1301 Zora-cho, Chuo-ku, Hamamatsu City, Shizuoka  
Tel: 053-440-2020

**L B**

**10 Hamamatsu City**

**Yamaha INNOVATION ROAD Corporate Museum**

Visit the museum to learn about Yamaha's history and play the piano or guitar yourself.

10-1 Nakazawa-cho, Chuo-ku, Hamamatsu City, Shizuoka  
Tel: 053-460-2010

**L E**

**29**

**Maeda Kogyo Co. (Leather shoe Recipe)**

Producer of Recipe, or leather shoes created by tailoring a single piece of leather and popular for its amazing softness and comfort. The Recipe store next to the factory offers a full lineup of products.

2-9-14 Yahata, Suruga-ku, Shizuoka City, Shizuoka  
Tel: 054-282-1035

**B**

**30**

**Maedate Sake Brewery**

Experience the traditional sake-making process and enjoy sake tasting.

1-1-1 Maedate, Maedate-cho, Hamamatsu City, Shizuoka  
Tel: 053-421-1111

**E B**

**32 Mishima City**

**Kurihara Shoten Izu Kappa**

Try your hand at making the thin tokoroten (gelidium jelly) strips and enjoy tasting its slippery smooth texture (reservations required).

13-3 Hirokoji-cho, Mishima City, Shizuoka  
Tel: 055-975-0098

**E B**

**34 Kannami Town**

**Yamamoto Shokuhin Izu Wasabi Museum**

See, experience, and enjoy Izu's wasabi. You can purchase souvenirs and go on a wasabi field tour.

894-1 Tsukamoto, Kannami Town, Tagata-gun, Shizuoka  
Tel: 055-970-0983

**B**

**12 Iwata City**

**Kawai Musical Instruments Manufacturing Co., Ltd. Ryuyo Factory**

Visit the factory and tour the grand piano assembly line (reservations required). For more information, see our website.

252 Tobhiramatsu, Iwata City, Shizuoka

**D**

**11 Hamamatsu City**

**Nihashi Dyeing Factory**

Dye your own original tenugui (Japanese hand towel) using the traditional chusen some technique (reservations required).

138-14 Tokiwa-cho, Chuo-ku, Hamamatsu City, Shizuoka  
Tel: 053-452-2686

**D E**

**15 Kakegawa City**

**Yamaha Kakegawa Factory Harmony Plaza**

Witness firsthand how Yamaha grand pianos are assembled and made (reservations required). See the plaza's official social media accounts for details.

1480 Ryoike, Kakegawa City, Shizuoka  
Tel: 0537-24-8069

**D**

**22 Shizuoka City**

**YUBOKUSHA**

All furniture pieces are made entirely from domestic chestnut wood. Purchase pieces that are designed and manufactured by skilled craftsmen.

106-1 Ushio, Fujieda City, Shizuoka  
Tel: 054-641-1305

**B**

**23 Shizuoka City**

**Takumishuku Traditional Hand Craft Arts Center**

This is one of the largest traditional craft centers in Japan. Visitors can enjoy hands-on crafting experiences such as making Suruga bamboo lattice ware, dyeing, lacquer painting, woodworking, making ceramics, as well as model making (reservations recommended).

3240-1 Mariko, Suruga-ku, Shizuoka City, Shizuoka  
Tel: 054-256-1521

**E B**

**35 Izu City**

**Amagi Wasabi Village**

Genuine wasabi cultivated in fresh water is available for purchase. You can also try your hand at harvesting and pickling wasabi (reservations required).

892-6 Yugashima, Izu City, Shizuoka  
Tel: 0558-85-0999

**E B**

**26 Shizuoka City**

**Shizuoka Hobby Square**

Shizuoka City, known as the plastic model capital of the world, attracts fans from all over the world. Visit this information hub to see the latest hobbies including models and traditional crafts.

Southpot Shizuoka 3F, 18-1 Minami-cho, Suruga-ku, Shizuoka City, Shizuoka  
Tel: 054-289-3033

**E B**

**14 Kakegawa City**

**Enshu Yamanaka Sake Brewery**

You can purchase the brewery's Aoi Tenka, which has won prizes in the annual Japan Sake Award for 9 consecutive years.

61 Yokosuka, Kakegawa City, Shizuoka  
Tel: 0537-48-2012

**B**

**13 Kakegawa City**

**Ozaki Kuzufu Kogei Co.,**

Traditional hand-woven kuzufu (textile using fibers from kudzu or arrowroot) souvenirs are available for purchase.

3-4 Shiroshita, Kakegawa City, Shizuoka  
Tel: 0537-24-2222

**B**

**16 Kakegawa City**

**Sugii Sake Brewery**

Founded in 1842, this sake brewery makes classic dry sake with a rich and acidic flavor profile utilizing traditional brewing methods. Available for purchase.

4-6-4 Koishigawa-Cho, Fujieda City, Shizuoka  
Tel: 054-641-0606

**B**

**18 Fujieda City**

**Yoshida Sake Brewery**

Experience the traditional sake-making process and enjoy sake tasting.

1-1-1 Yoshida, Fujieda City, Shizuoka  
Tel: 054-641-1111

**E B**

**19 Yaizu City**

**Isojiman Premium-Sake Brewing Co.,**

Isojiman sake, known for its clarity and a flavor that never disappoints, is available for purchase.

307 Iwashigashima, Yaizu City, Shizuoka  
Tel: 054-628-2204

**B**

**24 Shizuoka City**

**Sakyou**

Established in 1923, this hina doll company designs, sews, and dresses kimonos for hina dolls, or traditional Japanese dolls displayed on Girls' Day.

2-8 Saiwai-cho, Aoi-ku, Shizuoka City, Shizuoka  
Tel: 054-253-4828

**B**

**25 Shizuoka City**

**Toba Lacquerware**

Visit this showroom for Urushi no Wine Glass and other items made using the kongo ishime nuri, a lacquer technique unique to Shizuoka.

1-3 Otsubo-cho, Suruga-ku, Shizuoka City, Shizuoka  
Tel: 054-285-1177

**B**

\*Please refer to official websites for any closure days.