

Fujinokuni: Japan's Leader in Innumerable Areas

2024 Edition

Fujinokuni - The Home of Mt. Fuji My Shizuoka: The Best of Japan

	Item	Category	Year	Details
Food Capital	Canned Tuna	Highest production output in Japan	2022	22,224 metric tons
	Canned Bonito	Highest production output in Japan	2022	10,811 metric tons
	Southern Bluefin Tuna (Frozen)	Highest landed quantity in Japan	2022	4,172 metric tons
	Skipjack Tuna	Highest production revenue in Japan	2021	15.683 billion yen
	Tatsoi	Highest crop yield in Japan	2020	217 metric tons
	Salted Dried Horse Mackerel	Highest production output in Japan	2022	8,503 metric tons
	Retort pouch food --> Ready-to-eat meals	Highest shipment value in Japan	2021	29.195 billion yen
	Traditional Wasabi Cultivation in Shizuoka	Recognised as a Global Agricultural Heritage		Certified as of Mar 2018
Tea Capital	Tea	Largest cultivation area in Japan	2023	13,300 ha
	Green Tea	Highest annual expenditure in Japan (Shizuoka City)	2022	8,459 yen
	Black Tea (Processed)	Highest shipment volume in Japan	2021	8,542 metric tons
	Tea Beverages	Highest shipment value in Japan	2021	160.951 billion yen
	Traditional Tea-grass Integrated System	Recognised as a Global Agricultural Heritage		Certified as of May 2013
Flower Capital	Cut Branches	Highest shipment volume in Japan	2022	32.7 million flowers
	Gerbera	Highest shipment volume in Japan	2022	51.7 million flowers
	Gerbera	Highest production revenue in Japan	2021	1.8 billion yen
Forest Capital	E. sylvestris (Evergreen Tree)	Largest tree by girth in Japan		750 cm
	Orchard Area	Largest area in Japan	2023	22,600 ha
	Fuji Bamboo Garden	Largest variety of bamboo cultivation exhibits		Approx. 400 types
Water Capital	Fuji River	Widest river mouth in Japan		1,950 m
	Beaches with Class AA water	Most in Japan	FY 2023	49
	Lake Hamana	Longest perimeter in Japan (Brackish Lakes)		114km
Manu- facturing	Pet food	Highest shipment value in Japan	2021	45.347 billion yen
	Incandescent light fixtures	Highest shipment value in Japan	2021	311.071 billion yen
	Blankets & Lap Blankets	Highest export value in Japan	2022	302.99 million yen
	CRT Televisions	First successful TV projection in the world (the letter イ)		Completed in 1926
	Kiku Film	First camera film made in Japan		Completed in 1928
	Passenger Airplane	First domestic passenger airplane in Japan		Completed in 1922
Lifestyle /Safety	Eco Action 21	Highest no. of certified/registered members in Japan	As of October 31, 2023	971
	Enucleation Surgery	Most Enucleation Surgeries Performed in Japan	FY 2022	153 donations
	Senior Employment Centers	First pref. to have centers in all municipalities		Achieved in April 2000
	Highest temperature ever recorded	Hottest city in Japan (Hamamatsu City)	2020	41.1°C
	Shin-Tomei Expressway	The longest section of expressway ever opened in Japan	2012	162km
Sports/ Educa- tion	National Sports Festival (Boys' Football)	Most wins in Japan	As of 2023	24 times
	Fuji Speedway	First F1 Japanese Grand Prix		Held in 1976
	High School Karuta Championship	Most wins in Japan	As of 2023	24 times
Culture/ Tourism	Gyokusenji Temple	First consulate general in Japan		Established in 1856
	Former Mitsuke School	Oldest wooden western-style primary school in Japan		Completed in 1875
	Lodging Facilities with Hot Springs	Most in Japan	As of March 31, 2022	2,120 facilities



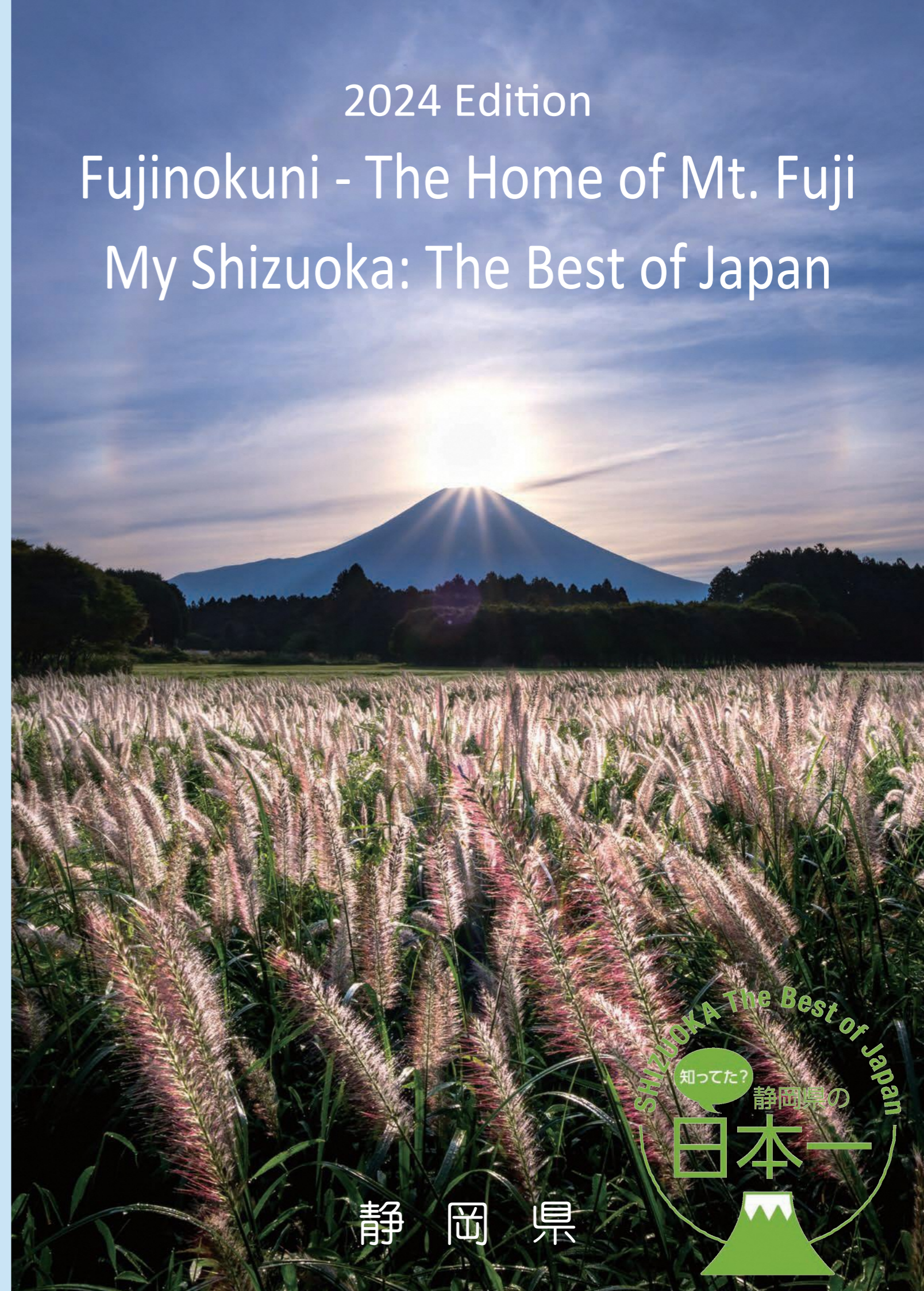
Shizuoka Prefecture

My Shizuoka: The Best of Japan
 (Official Shizuoka Prefecture Website)
<https://www.pref.shizuoka.jp/kensei/information/myshizuoka/>
 Data Utilization Promotion Section
 Shizuoka Prefectural Government
 9-6 Otemachi, Aoi-ku, Shizuoka City, Shizuoka Prefecture, 420-8601
 Phone: 054-221-2242 Fax: 054-221-3609
 E-mail: datakatsuyou@pref.shizuoka.lg.jp



Published in February 2024

この印刷物は、16,000部作成し、1部あたりの印刷経費は11.2円です。



静岡県

Fujinokuni: Japan's Leader across Countless Categories

Summary of Shizuoka Prefecture

Total population: 3,553,518

(As of October 1, 2023)

Total area: 7,777km²

(2023)



Flower Capital

Gerbera

Planted area: 31% (2022)

An abundance of varieties, marked by their diverse assortment of colors

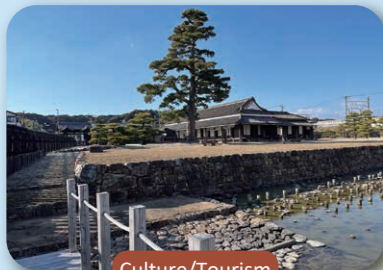


Food Capital

Brussels sprouts

93% of domestic production (2020)

Some 60 to 70 buds can be harvested from one plant due to the "side buds" that grow along the stems



Culture/Tourism

Arai Sekisho

The only remaining Edo period checkpoint
Founded by Tokugawa Ieyasu in 1600
Designated as a "Special Historic Site" by the country in 1955



We are releasing a video introducing the best things in Japan from Shizuoka Prefecture, starting with the famous Mt. Fuji and Shizuoka tea to surprising new things!
Please take a look through this QR code.

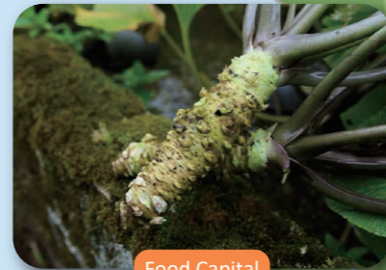


Manufacturing

Plastic Models

78% of domestic shipment value (2021)

World-renowned for production of mini 4WD and other popular products



Food Capital

Wasabi

68% of domestic production revenue (2021)

Thick, succulent rhizomes (roots) prized for its high quality
One popular product is Wasabi-zuke (pickled wasabi)

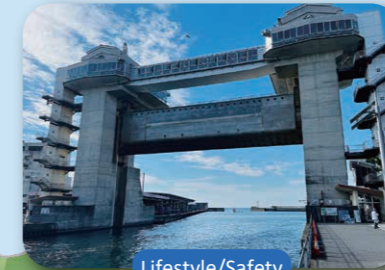


Mt. Fuji

Height: 3,776 m

A sacred and majestic mountain that has given rise to various arts and beliefs

Registered as a World Cultural Heritage with its 25 constituent properties in June 2013



Lifestyle/Safety

Numazu Port Water Gate Observation Deck "View-O"

Weight: 923 tons

The heaviest shell-structure single-stage gate facility in Japan
Clear span: 40m, gate-height: 9.3m



Culture/Tourism

Mishima Skywalk

Length: 400 m

Japan's longest pedestrian suspension bridge overlooking Japan's tallest point, Mt. Fuji, and Japan's deepest point, Suruga Bay



Food Capital

Unshu Tangerines

26% of domestic production (2022)

Popular for its perfect balance of sweetness and acidity and as well as its rich flavor

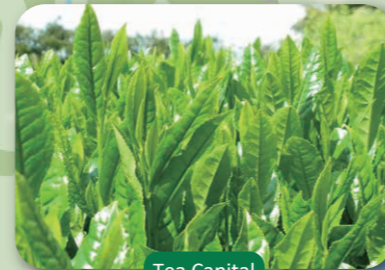


Culture/Tourism

Horai Bridge

Length: 897.4 m

Certified as the world's longest wooden footbridge by Guinness World Records in 1997
Located in Shimada City, spanning across the Oigawa River



Tea Capital

Tea

37% of domestic production of Aracha/Unrefined Tea (2022)

Shizuoka, with its ideal climate and sophisticated cultivation techniques, is famous as Japan's top tea producing prefecture



Food Capital

Japanese Spider Crab

Total catch (2022): 11,180 kg

The world's largest crab, caught in Suruga Bay, measures over 3m across its outstretched legs



Water Capital

Kakita River

Water flow: Approx. 1.1 million tons/day

A strong torrent fueled by the surfacing of groundwater reserves fed by precipitation from Mount Fuji; designated by the national government as one of the Top 100 Water Sources and a Natural Monument in 2011



Manufacturing

Pianos

100% of domestic market (2021)

Serving as the foundation for Shizuoka's musical instrument manufacturing industry

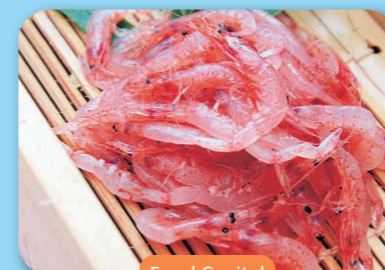


Food Capital

Greenhouse Melons

36% of domestic production (2022)

Renowned for their beautiful appearance and luscious fragrance, made possible by rigorous quality management at every stage

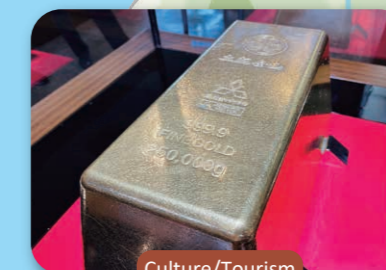


Food Capital

Sakura Shrimp

100% of domestic catch (2022)

A "gem of the sea" that can only be found in Suruga Bay



Culture/Tourism

gold nugget

Weight: 250 kg

Certified by Guinness World Records in February 2006

as the world's largest gold nugget



Nirayama Reverberatory Furnaces

Only remaining reverberatory furnaces that actually operated***

Built in 1857 to cast cannons and other weapons; included in the World Cultural Heritage list as part of the Sites of Japan's Meiji Industrial Revolution in July 2015

